

User guide

Television service

C-tal



Table of contents

- 3 [Glossary](#)
- 6 [Wired \(network\) connection](#)
- 7 [Wi-Fi connection](#)
- 8 [Synchronizing the remote control to the set-top box](#)
- 10 [Remote control and functions](#)
- 11 [The remote control and its main keys](#)
- 13 [Navigation guide options](#)
- 15 [Live TV and the option **Replay** « Rejouer »](#)

RECORDINGS

- 17 [The recording set-top box](#)
- 18 [Recordings of live content, future or already broadcast*](#)
- 19 [Series and repeat recording](#)
- 20 [Viewing and managing my recordings](#)
- 21 [Terms of use](#)

GLOSSARY

TERMS

DEFINITIONS

Content

This term refers to a program or a movie.

Ethernet socket

It's a plug into which you insert the end of the network cable.

HDMI cable



High-Definition Multimedia Interface is a cable for data transfer, especially video data, for example between a set-top box and a TV set.

Network cable



Cable used to connect multiple devices such as routers, modems, set-top boxes, etc.

Power cable



Cable used to connect an electrical device to a power source.

Power surge bar

This equipment is a surge suppressor that can protect electronic devices in the event of a power grid overload or, for example, a thunderstorm.

Repeated recording

This function allows you to: (i) record regularly scheduled programs on a daily or weekly basis, (ii) record all programs with the same title, both new and repeat episodes.

Replay « Rejouer »

This function is available with Recordings and lets you go back 24 hours in the channel guide menu to replay content that has already been broadcast. This allows you to view or record it.

GLOSSARY MORE

TERMS

DEFINITIONS

Serie recording

This function lets you record all shows with the same title. Full information on the series is provided by the channel's broadcaster, enabling automatic recording of all episodes.

STB

This is short for set-top box.

WIRED (NETWORK) AND WI-FI CONNECTION

Wired (Network) connection

Wired set-top box connection, steps to follow

1. Insert the network cable into one of the yellow **(1)** **[ETHERNET*]** ports on the back of your router. Then insert the other end into the LAN port **(2)** on the back of the **STB***
2. Locate the **HDMI*** port on your TV. Most TV sets are equipped with several HDMI ports, usually located in the back or on the side.
3. Take one end of the HDMI cable and insert it firmly into the HDMI port on your TV.
4. Take the other end of the HDMI cable and insert it firmly into the HDMI port **(3)** on the back of the set-top box.
5. Insert the end of the **power cord*** into the port **(4)** on the back of the decoder and plug it into a power outlet or **power bar***.



[Go to the wired installation video](#)

* Please refer to the glossary for definitions of terms.

Wi-Fi connection

Wi-Fi connection of the set-top box, steps to follow

In the event of loss of connection or technical issues, it will be necessary to connect your set-top box in wired mode in order to troubleshoot your service.

1. Locate the **HDMI*** port on your TV. Most TV sets are equipped with several HDMI ports, usually located on the rear or side.
2. Take one end of the HDMI cable and insert it firmly into the HDMI port on your TV.
3. Take the other end of the HDMI cable and insert it firmly into the HDMI port **1** on the back of the set-top box.
4. Insert the end of the **power cord*** into the port **2** on the back of the **STB*** and plug it into a power outlet or **power bar***.



[Go to the Wi-fi installation video](#)

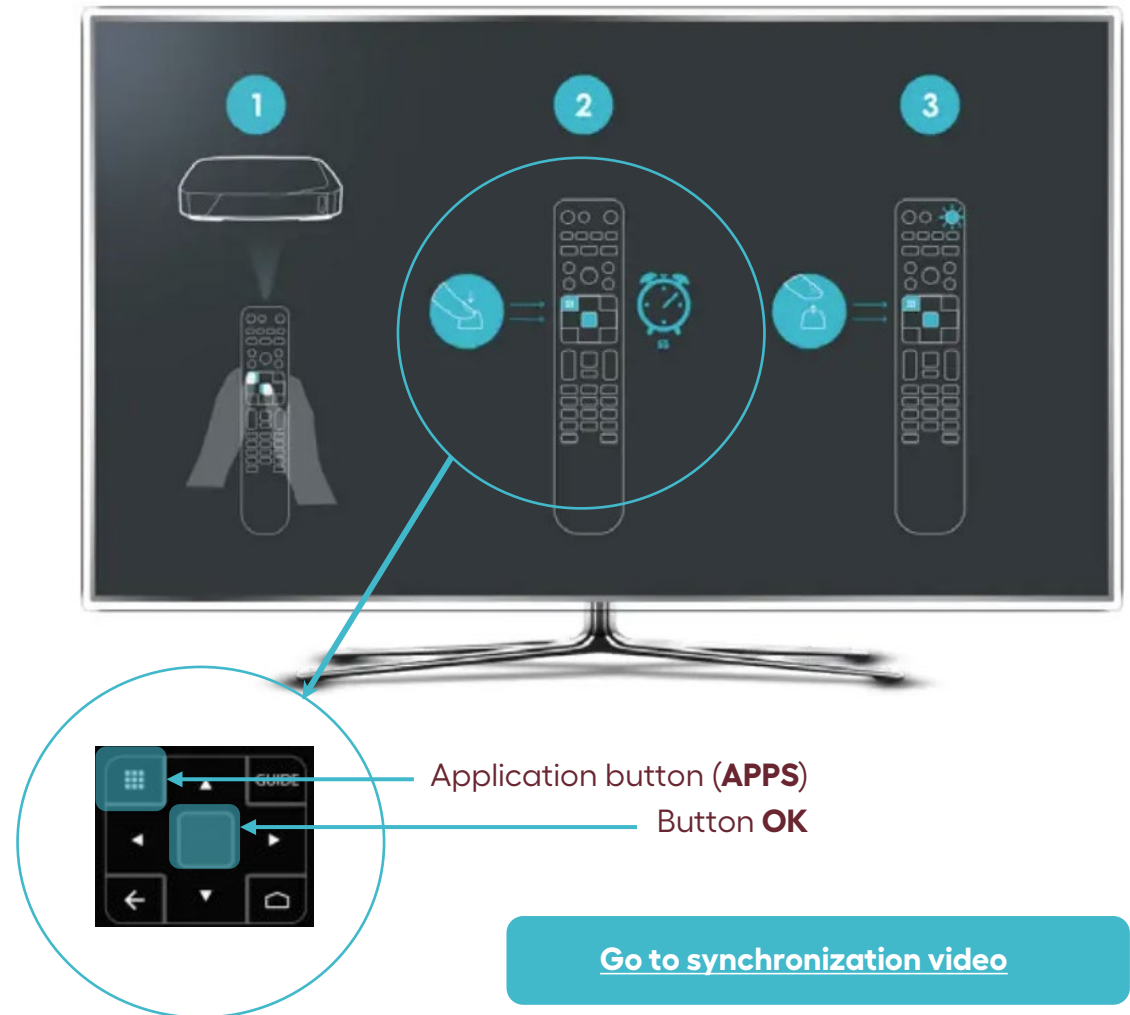
** Please refer to the glossary for definitions of terms.*

Synchronization

Synchronize the remote control with the set-top box.

Using your TV remote control, select the set-top box's HDMI port in the "Sources" menu.

1. Align the new CTAL remote control with the set-top box.
2. Press and hold the **OK** and **APPS** buttons together for **5 seconds**, or until the STB power button **flashes twice** to indicate successful pairing. Release both buttons.
3. The STB's power LED should light up blue. Once successfully paired, the pairing screen will disappear from your TV screen.



[Go to synchronization video](#)

THE REMOTE CONTROL

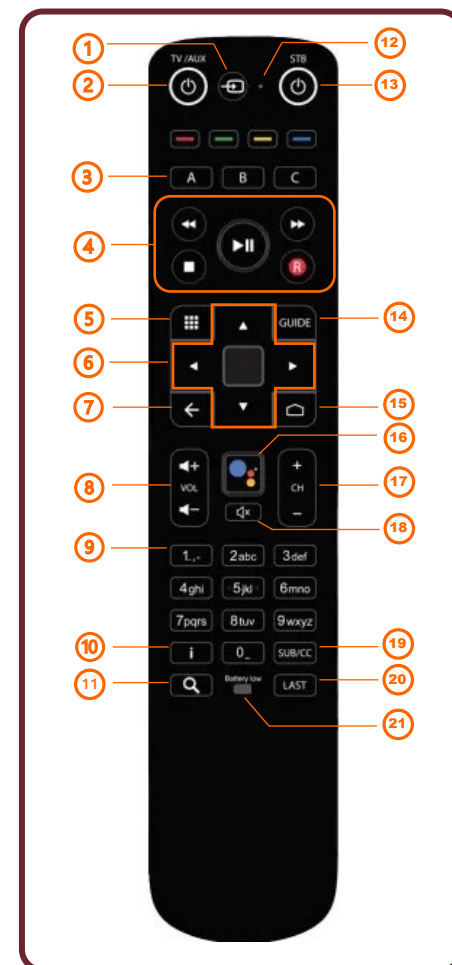
Remote control functions

Remote control functions for Set-Top Box (STB) operation

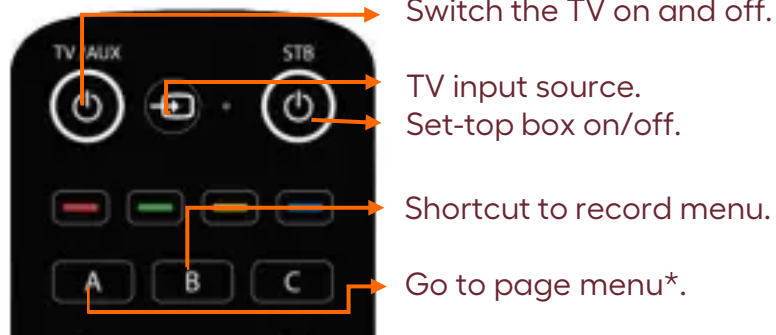
1. Select TV input source.
2. Switch the TV on and off.
3. **A, B menus***.
4. Control recording and time-delay mode.
5. Access the applications menu.
6. Browse the channel guide and confirm.
7. Exit menus.
8. Control the TV volume.
9. Select a channel or type text.
10. Get a detailed description of TV program.
11. Search for a specific content.
12. Microphone.
13. Switch the STB on and off.
14. Access channel guide.
15. Android TV main menu.
16. Activate **voice command***.
17. Browse channels.
18. Switch volume to mute.
19. Activate and deactivate subtitles.
20. Back to previous channel.
21. Battery status.

*A, B menu and voice command :

- **A button** : Displays navigation menu at the bottom of your screen. [See page 12 for more details.](#)
- **B button** : Provides direct access to the recording menu. [See page 19 for more details.](#)
- **Voice command** : The voice control function is Google Assistant, which provides access to the set-top box's applications. It does not control CTAL's TV Service. For more information, please visit assistant.google.com.



The remote control and its main keys



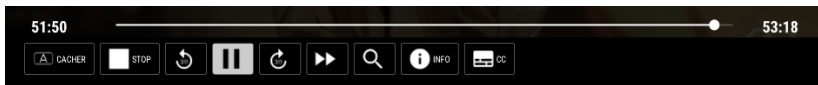
*When you're listening live TV and press the "A" button, a menu opens at the bottom of your TV:



*When you are in the **channel guide** and press the "A" key, a different menu opens at the bottom of your TV: (see page 10 for details of this menu).



*When you're in **a recording or replay mode** and you press the "A" key, a menu with the time bar of your content opens up, so you can see where you are in your viewing and move forward more quickly:



NAVIGATION GUIDE

Navigation guide options

Navigation guide menu

- Press the button **A** on your remote control. A menu will appear at the bottom of your TV screen. **1**



1 Navigation guide menu

Color codes in the guide

Serie Sport
 Movie Children



Menu functions



The « DATE » menu options

Menu functions **2**

- View your recordings by selecting.
- Perform a search by selecting:
- Save or restart content.
- Find out more about content by selecting.
- Select and make page jumps of 5 channels at a time in the guide.

The « DATE » menu options **3**







This selection gives you access to a menu that lets you move through the guide in blocks of : **- 4h, +4h, +24h.**

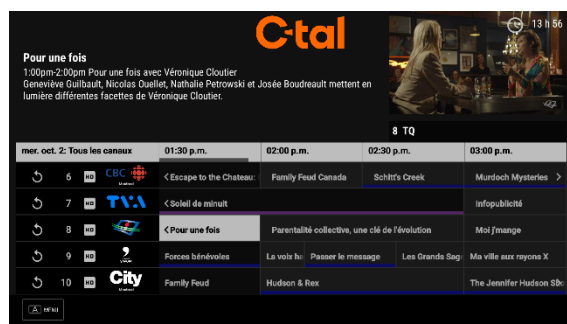
You can return to the current time by selecting .

LIVE TV

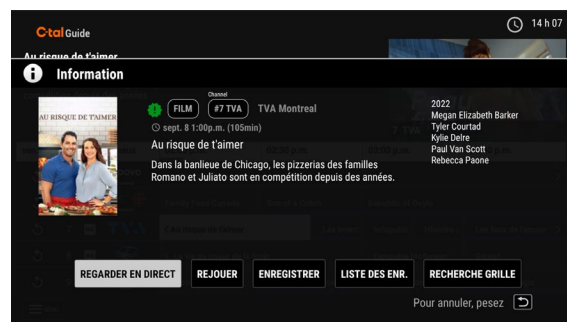
Live TV and the replay option « Rejouer »

Live TV

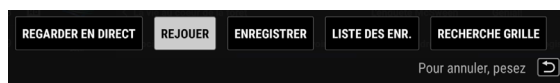
- Press the button  on your remote control. The channel guide will appear on your TV screen.
- Press one of the buttons  on your remote control to navigate the channel guide. Your selection will be highlighted on your TV screen.
- To find out more about a **content*** item, press the button  on your remote control. It will be displayed on screen.
- Press the button  on your remote control to confirm your live listening selection.



Channel guide



Content information



The replay menu « Rejouer »


Replay option « Rejouer »*

Missed a program? This option lets you rewind the channel guide by up to **24 hours**. *This option is only available with Recordings.*

- Press the button  on your remote control. The channel guide will appear on the screen.
- Press one of the buttons  on your remote control to navigate through the channel guide. Move back to content that has already been broadcast and press .
- A content information window will appear, along with a menu.
- Select the REPLAY option “**REJOUER**” and confirm by pressing the button . Content will begin.
- You can also record content. See : **Recording**

RECORDINGS

The recording set-top box

- 📺 You'll have a bank of 150 hours to record your favorite content, as well as access to replay “Rejouer”, pause and rewind modes for all the set-top boxes in your home. This is a paying option..
- 📺 Only channels marked with this logo  in the channel guide can be recorded.
- 📺 You can record 5 programs simultaneously and watch the content of your choice, even if multiple recordings are in progress.
- 📺 If a set-top box is damaged or replaced, your recordings and programming will not be lost because they are associated with your account, which is cloud-based.
- 📺 What's more, you can choose the type of recording that suits you best, depending on the content being broadcast:

Recording of live or broadcast content;

Recording content in series;

Recording content on repeat.

Helpful hints

Make sure you have recording time available, so you won't have any surprises when you schedule future events. You'll find this information at the bottom of the recording list.



Liste ENP		
Liste des enregistrements (6)		
1	Le tricheur	Sep 8th 30 min
2	Question de jugement	Sep 8th 30 min
3	Ricardo	Sep 8th 30 min
4	Mario Dumont	Sep 8th 59 min
5	Ça c'est drôlet	Sep 8th 31 min
6	TVA nouvelles	Sep 2nd 35 min

Espace Disponible: 150h

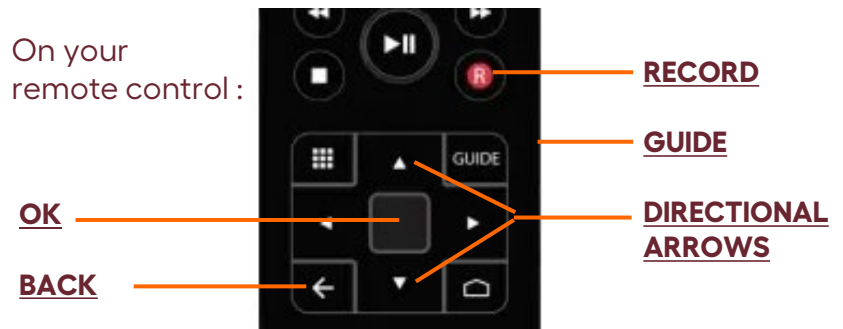
Available space

Recordings of live content, future or already broadcast*.

Recording

1. Press the **"GUIDE"** button on your remote control to access the channel menu.
2. Press one of the **directional arrows** on your remote control to navigate through the channel guide. Select your content, which will be highlighted on your TV screen.
3. Press the **"RECORD"** button on your remote control. An information window and menu will appear.
4. To record, use your remote control's arrow keys to move the highlight to **ENREGISTRER**, and press the central arrow key **"OK"**. Your registration will be confirmed in a new window.
5. Press the **"RETOUR"** arrow on your remote control to return to the channel guide.

On your remote control :



On your TV screen: the recording menu.



When TV content has already started, you have the option of replaying* or recording it from the very beginning.

*Broadcast within the last 24 hours.

Serial recording and confirmation of your recording

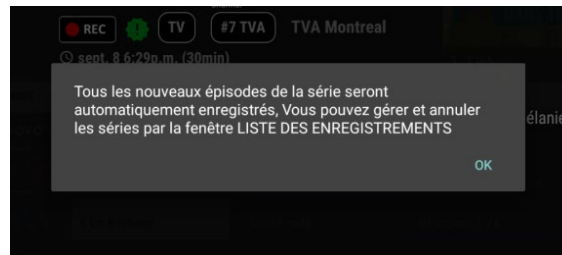
Serial* recording

1. Repeat the above steps.
2. Once you've made your selection, press the **“RECORD”** button on your remote control. An information window and menu will appear.
3. Use your remote control arrows to move your selection to **ENR SÉRIE**, and press the **“OK”** button. A new window will tell you that all new episodes will be automatically recorded.
4. Press the **“OK”** button on your remote control to confirm.
5. Press the **“RETOUR”** button on your remote control to return to the channel menu.

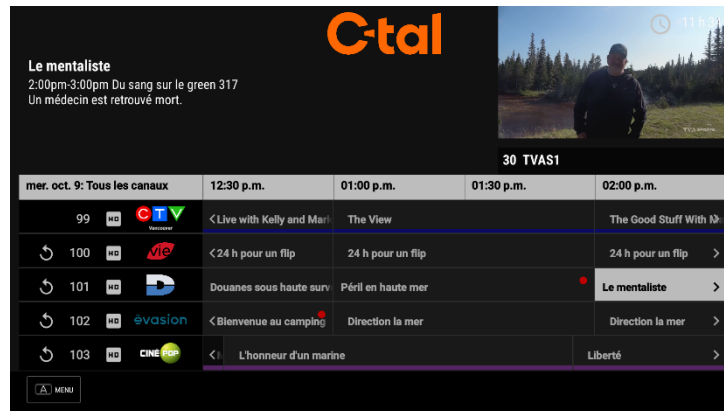
Serial recording menu



Confirmation of your choice of serial recording



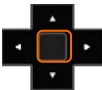
Registration confirmation



When content is being recorded or programmed, a red dot is shown in the channel guide for all types of recording.

View and manage my recordings

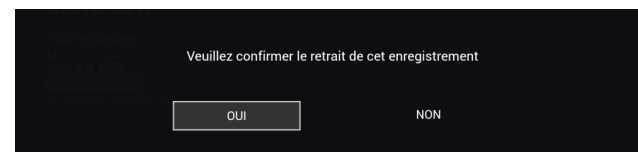
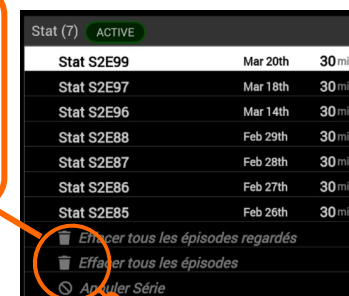
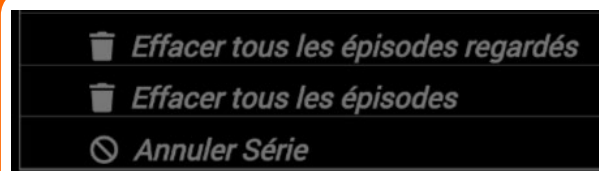
To view and delete my recordings

- Press **B** to go directly to your recording's menu.
- You can stop listening to content at any time and continue at another time. Simply select "Keep recording" (Conserver l'enregistrement) when prompted.
- To **delete** or **end the recording of a series**, select the desired content and go to the bottom of the list. **Choose the appropriate option.**
 - Delete all watched episodes
- Effacer tous les épisodes regardés
 - Delete all episodes
- Effacer tous les épisodes
 - Cancel series
- Annuler séries
- Confirm your choice by pressing the button  on your remote control. A new confirmation window will appear, so confirm your choice again.

Indicates the number of recorded programs of the same title



Recording menu



Confirm your action

Terms and conditions of use

Rental equipment

- The Cooperative remains owner of the rental equipment*.
- At all times, you must use this equipment with care, prudence and diligence and in accordance with the Cooperative's directives, regulations and applicable laws.
- The equipment may not be used at any address other than your own.
- You must notify the Cooperative immediately if the rental equipment is lost, stolen, broken or destroyed.
- If you cancel your television service, you must return the rental equipment to the Cooperative in accordance with the Equipment Return Agreement.
- You may be charged for any equipment lost or damaged other than as a result of an act of God.



* Any rental Equipment remains the property of the Cooperative. It must be returned within thirty (30) days of the date of termination of the services to activate the closing of the account and the production of the final invoice. All equipment must be returned undamaged and in its original condition with all documentation and packaging in good condition. If an unit is not returned within the prescribed maximum period of thirty (30) days, the full cost of the equipment will be charged to your account.

Thank you
for your
support

ctal.ca

info@ctal.ca

819 623 2825

600, boul. Albiny Paquette
Mont-Laurier, QC, J9L 1L4